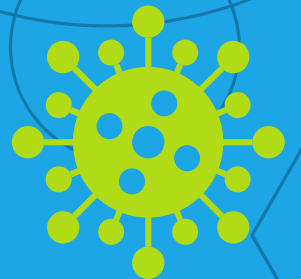




SOLIS  
BIODYNE

# SOLIScript® 1-step CoV Kit



SOLIS BIODYNE OÜ  
E: [info@solisbiodyne.com](mailto:info@solisbiodyne.com)  
T: +372 7409 960  
F: +372 7402 079

[solisbiodyne.com](http://solisbiodyne.com)

# For sensitive and reliable detection of SARS-CoV-2 RNA targets by one-step RT-qPCR

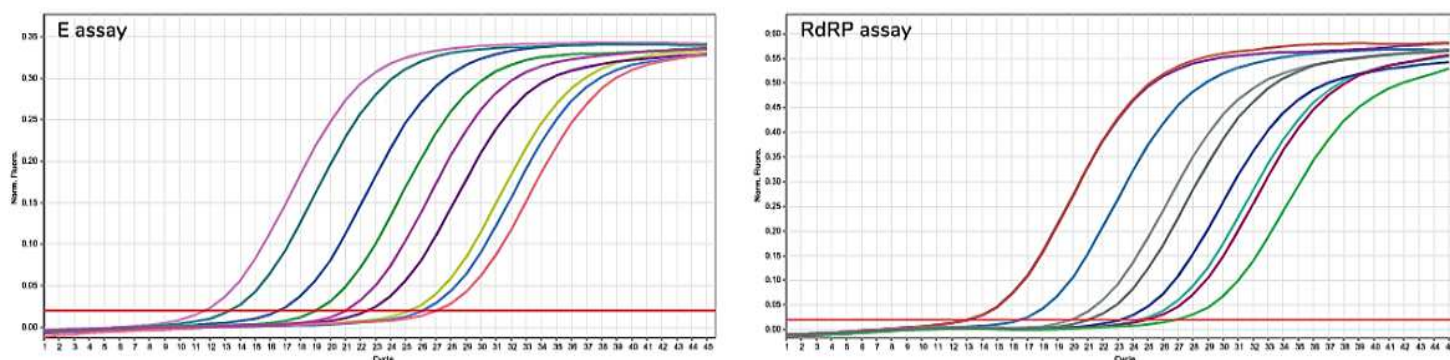
SOLIScript® 1-step CoV Kit is optimized for highly sensitive one-step real-time RT-PCR (RT-qPCR) detection of viral RNA of severe acute respiratory syndrome coronavirus 2 (SARS-CoV-2) from RNA samples extracted from nasopharyngeal and oropharyngeal swab specimens. SOLIScript® 1-step CoV Kit is suitable for probe-based detection of up to four targets simultaneously.

- SARS-CoV-2 primers and probes, applicable positive and internal extraction controls are not provided with the Kit and should be supplied by the user.
- The Kit has been tested and validated by diagnostic laboratories using primer-probe panels recommended by Charité, (Germany) (Figure1) and CDC (USA) protocols according to WHO "Coronavirusdisease (COVID-19) technical guidance: Laboratory testing for 2019-nCoV in humans", section: "Molecular assays to diagnose COVID-19"; subsection: "In-house developed molecular assays".

## Kit components:

- **40x One-step SOLIScript® CoV Mix:** SOLIScript® Reverse Transcriptase, RiboGrip™ RNase Inhibitor
- **5x One-step Probe CoV Mix:** HOT FIREPol® DNA polymerase, reaction buffer, dNTPs, 15 mM MgCl<sub>2</sub> (1x qPCR solution - 3 mM)
- **Water, nuclease-free**
- Routine storage: -20°C. Shipping and temporary storage for up to two weeks at room temperature (15–25°C).

More resources available here: [https://www.solisbiodyne.com/EN/products/onestep\\_rtqpcr/soliscript\\_1step\\_cov\\_kit](https://www.solisbiodyne.com/EN/products/onestep_rtqpcr/soliscript_1step_cov_kit)



**Figure 1.** SOLIScript® 1-step CoV Kit was used to perform detection of E gene (left) and RdRP gene (right) in positive COVID-19 clinical RNA samples. Singleplex reactions were performed using the published and widely used primers and dual-labelled FAM-BHQ1 probes from Berlin, Charité RT-qPCR diagnostic panel. Reactions were performed on Rotor-Gene 6000 platform following instructions recommended in SOLIScript® 1-step CoV Kit Supplementary Data Sheet.

**This product is supplied for Research Use Only.**

**It is suitable for use as a component of molecular diagnostic assays, where applicable country laws allow. This product alone does not provide any diagnostic result.**

- Universal component in different SARS-CoV-2 diagnostic assays
- Up to 4 targets in one reaction
- Shipping at room temperature

## Ordering information

Product	CAT. NO.	RXN / 20 µl
SOLIScript® 1-step CoV Kit	08-65-0000S (free sample)	50
	08-65-00250	250
	08-65-05000	5000



For further details please contact [info@solisbiodyne.com](mailto:info@solisbiodyne.com)



Telephone: 780.438.5110  
Toll Free: 800.661.9289  
Fax: 780.462.5776  
Email: [sales@rosesci.com](mailto:sales@rosesci.com)  
Website: [www.rosesci.com](http://www.rosesci.com)

4027 – 97th Street NW, Edmonton, Alberta T6E 5Y5